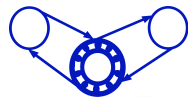


Townsend Bearings

**DRIVES,
CONTROLLERS
&
COUPLINGS
CATALOGUE**

COUPLINGS & UNIVERSAL JOINTS

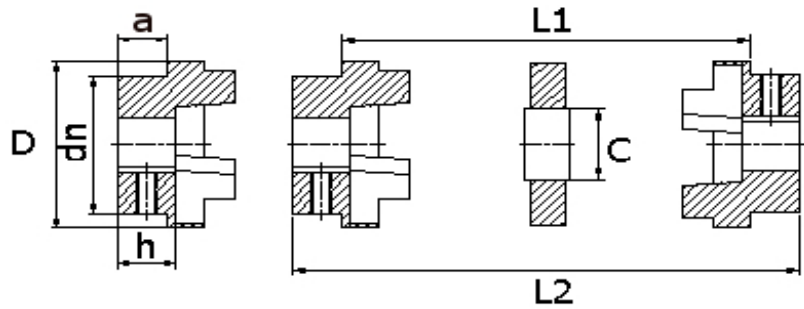




Townsend Bearings



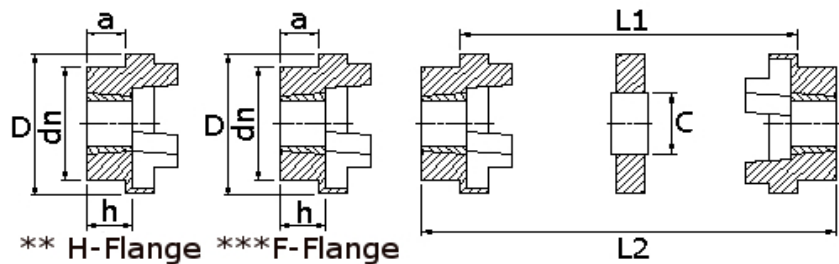
Parallel Bore Flexible Shaft Couplings HRC Type



Size of Coupling	Min Bore	Max Bore	D	dn	a	h	C	L1	L2*
HRC70B	10	32	69	55	21	25	31	25	68
HRC90B	10	38	85	60	20	34	32	31	91
HRC110B	10	48	112	80	19	44	45	45	117
HRC130B	20	55	130	90	18	50	50	53	136
HRC150B	28	65	150	104	24	58	62	60	155
HRC180B	28	75	180	120	35	68	77	73	184
HRC230B	45	95	225	150	40	85	99	86	229
HRC280B	55	130	275	206	51	106	119	106	286

*Approximate overall length

Taper Bore Flexible Shaft Couplings HRC Type



** H-Flange ***F-Flange

Size of Coupling	Bush Ref.	Bore Min	Bore Max	D	dn	a	h	C	L1	L2
HRC70	1008	9	25	69	55	21	24	31	25	65
HRC90	1108	9	28	85	60	20	24	32	31	70
HRC110	1610	12	42	112	80	19	27	45	45	82
HRC130	1610	12	42	130	90	18	27	50	53	89
HRC150	2012	14	50	150	104	24	34	62	60	107
HRC180	2517	16	65	180	120	35	47	77	73	142
HRC230	3020	25	75	225	150	40	53	99	86	165
HRC280	3525	28	90	275	206	51	67	119	106	208

*Approximate overall length

**H = Flange for external bush assembly

***F = Flange for internal bush assembly

All dimensions in mm unless specified

If a dimension is critical to your application please contact our sales department for confirmation.

Please note : errors and omissions excepted.