

Townsend Bearings



Bushes

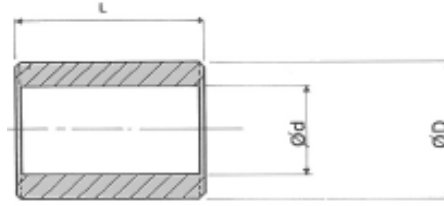


**Townsend
Bearings**



Contents

Oil Impregnated Sintered Bronze Bushes (including Oilite™)	
Metric: Plain.....	4
Metric: Flange.....	6
Imperial: Plain.....	7
Imperial: Flange.....	9
Bars: Cored & Solid, Metric & Imperial.....	10
PTFE Lined Steel Split Bush (including Glacier™)	
Metric: Plain.....	11
Metric: Flange.....	14
Imperial: Plain.....	15
Thrust Washers and Strip - Metric & Imperial.....	16



All dimensions in mm.

Ordering Example: AMC 0305 04 (for a 4mm long AMC 0305)

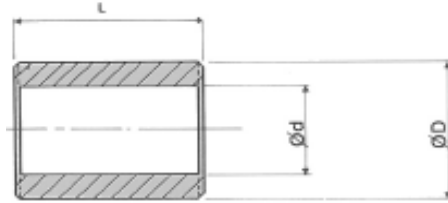
Type Ref.	Ød (G7)			ØD (s7)			Available Lengths
	Basic	Min.	Max.	Basic	Min	Max	
AMC 0103	1	1.002	1.012	3	3.014	3.024	02
	1.5	1.502	1.512	4	4.019	4.031	02
AMC 0205	2	2.002	2.012	5	5.019	4.031	02 03
	2.5	2.502	2.512	6	6.019	6.031	02 03
AMC 0305	3	3.002	3.012	5	5.019	5.031	03 04 06
AMC 0306	3	3.002	3.012	6	6.019	6.031	03 04
AMC 0407	4	4.004	4.016	7	7.023	7.038	03 04 06
AMC 0408	4	4.004	4.016	8	8.023	8.038	03 04 06 08 12
AMC 0508	5	5.004	5.016	8	8.023	8.038	04 05 08 10 12 16
AMC 0509	5	5.005	5.016	9	9.023	9.038	04 05 08
AMC 0609	6	6.004	6.016	9	10.023	10.038	04 06 10 12 16
AMC 0610	6	6.004	6.016	10	10.023	10.038	04 06 10 12 16
AMC 0710	7	7.005	7.020	10	10.023	10.038	05 08 10
AMC 0711	7	7.005	7.020	11	11.028	11.046	05 08 10
AMC 0811	8	8.005	8.020	11	11.028	11.046	06 08 12
AMC 0812	8	8.005	8.020	12	12.028	12.046	06 08 12 16 20
AMC 0814	8	8.005	8.020	14	14.028	14.046	08 12 16 20
AMC 0912	9	9.005	9.020	12	12.028	12.046	06 10 14
AMC 0914	9	9.005	9.020	14	14.028	14.046	10 14
AMC 1013	10	10.005	10.020	13	13.028	13.046	10 16
AMC 1014	10	10.005	10.020	14	14.028	14.046	08 10 16 20 25
AMC 1015	10	10.005	10.020	15	15.028	15.046	10 16 20 25
AMC 1016	10	10.005	10.020	16	16.028	16.046	08 10 16 20 25
AMC 1215	12	12.006	12.024	15	15.028	15.046	12 16 20 25
AMC 1216	12	12.006	12.024	16	16.028	16.046	08 12 16 20 25
AMC 1218	12	12.006	12.024	18	18.028	18.046	08 12 16 20 25
AMC 1418	14	14.006	14.024	18	18.028	18.046	10 14 20
AMC 1420	14	14.006	14.024	20	20.035	20.056	10 14 20 30
AMC 1519	15	15.006	15.024	19	19.035	19.056	10 15 20 25 30
AMC 1521	15	15.006	15.024	21	21.035	21.056	15 20 25
AMC 1620	16	16.006	16.024	20	20.035	20.056	12 16 20 25 30
AMC 1622	16	16.006	16.024	22	22.035	22.056	12 16 20 25 30
AMC 1822	18	18.006	18.024	22	22.035	22.056	12 08 30
AMC 1824	18	18.006	18.024	24	24.035	24.056	18 30
AMC 1825	18	18.006	18.024	25	25.035	25.056	22 30
AMC 2024	20	20.007	20.028	24	24.035	24.056	16 20 32
AMC 2025	20	20.007	20.028	25	25.035	25.056	15 20 25 30
AMC 2026	20	20.007	20.028	26	26.035	26.056	15 20 25 30
AMC 2028	20	20.007	20.028	28	28.035	28.056	25 30 50
AMC 2227	22	22.007	22.028	27	27.035	27.056	15 20 25

Oil Impregnated Sintered Bronze Bushes

Metric: Plain (continued)



Townsend Bearings

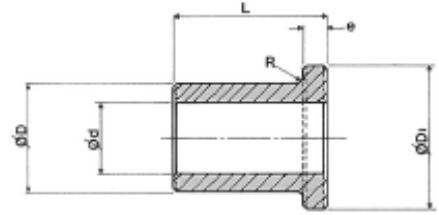


All dimensions in mm.

Ordering Example: AMC 2228 15 (for a 15mm long AMC 2228)

Type Ref.	Ød (G7)			ØD (s7)			Available Lengths
	Basic	Min.	Max.	Basic	Min	Max	
AMC 2228	22	22.007	22.028	28	28.035	28.056	15 20 25 30
AMC 2232	22	22.007	22.028	32	32.043	32.068	20 50
AMC 2530	25	25.007	25.028	30	30.035	30.056	20 25 30 50
AMC 2532	25	25.007	25.028	32	32.043	32.068	20 25 30 35 40
AMC 2535	25	25.007	25.028	35	35.043	35.068	25 35 50
AMC 2833	28	28.007	28.028	33	33.043	33.068	20 25 30
AMC 2836	28	28.007	28.028	36	36.043	36.068	20 25 30 40
AMC 3035	30	30.007	30.028	35	35.043	35.068	20 25 30
AMC 3038	30	30.007	30.028	38	38.043	38.068	20 25 30 40
AMC 3040	30	30.007	30.028	40	40.043	40.068	25 35 50
AMC 3238	32	32.009	32.034	38	38.043	38.068	20 25 30
AMC 3240	32	32.009	32.034	40	40.043	40.068	20 25 30 40 45
AMC 3541	35	35.009	35.034	41	41.043	41.068	25 35 40
AMC 3544	35	35.009	35.034	44	44.043	44.068	22 28 35
AMC 3545	35	35.009	35.034	45	45.043	45.068	25 35 40 50
AMC 3642	36	36.009	36.034	42	42.043	42.068	22 28 36 45
AMC 3645	36	36.009	36.034	45	45.043	45.068	22 28 26 45
AMC 3844	38	38.009	38.034	44	44.043	44.068	25 35 45
AMC 3848	38	38.009	38.034	48	48.043	48.068	25 35 45 55
AMC 4046	40	40.009	40.034	46	46.043	46.068	30 40 50
AMC 4050	40	40.009	40.034	50	50.043	50.068	25 30 35 40 50 60
AMC 4248	42	42.009	42.034	48	48.043	48.068	40 50

Type Ref.	Ød (G8)			ØD (s8)			Available Lengths
	Basic	Min.	Max.	Basic	Min	Max	
AMC 4252	42	42.009	42.048	52	52.053	52.099	30 50 60
AMC 4551	45	45.009	45.048	51	51.053	51.099	35 45 55
AMC4555	45	45.009	45.048	55	55.053	55.099	35 45 55 75
AMC 4556	45	45.009	48.048	56	56.053	56.099	26 28 45 56
AMC 4855	48	48.009	48.048	55	55.053	55.099	35 50
AMC 4858	48	48.009	48.048	58	58.053	58.099	50 70
AMC 5058	50	50.009	50.048	58	58.053	58.099	35 50
AMC 5060	50	50.009	50.048	60	60.053	60.099	30 35 40 50 63 70 75
AMC 5563	55	55.010	55.056	63	63.053	63.099	40 55
AMC 5565	55	55.010	55.056	65	65.053	65.099	40 55 70
AMC 6068	60	60.010	60.056	68	68.059	68.105	50 60
AMC 6070	60	60.010	60.056	70	70.059	70.105	50 60
AMC 6072	60	60.010	60.056	72	72.059	72.105	50 60 70
AMC 6370	63	63.010	63.056	70	70.059	70.105	40 50



All dimensions in mm.

Ordering Example: AMF 0306 04 (for a 4mm long AMF 0306)

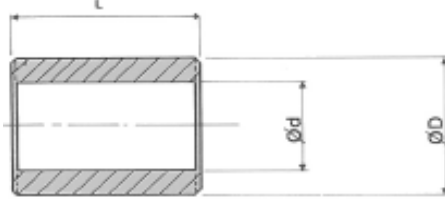
Type Ref.	Ød (G7)			ØD (s7)			ØD ₁	e	Available Lengths
	Basic	Min.	Max.	Basic	Min	Max			
AMF 0103	1	1.002	1.012	3	3.014	3.024	5	1	02
AMF 0205	1.5	1.502	1.512	4	4.019	4.031	6	1	02
	2	2.002	2.012	5	5.019	5.031	8	1.5	03
AMF 0306	2.5	2.502	2.512	6	6.019	6.031	9	1.5	03
	3	3.002	3.012	6	6.019	6.031	9	1.5	04
AMF 0408	4	4.004	4.016	8	8.023	8.038	12	2	03 04 06 08 12
AMF 0509	5	5.004	5.016	9	9.023	9.038	13	2	04 05 08
AMF 0610	6	6.004	6.016	10	10.023	10.038	14	2	04 06 10
AMF 0711	7	7.005	7.020	11	11.028	11.046	15	2	05 08
AMF 0812	8	8.005	8.020	12	12.028	12.046	16	2	06 08 12 16
AMF 0914	9	9.005	9.020	14	14.028	14.046	19	2.5	06 10 14
AMF 1013	10	10.005	10.020	13	13.028	13.046	17	2.5	10 16 20
AMF 1015	10	10.005	10.020	15	15.028	15.046	21	3	10 16 20
AMF 1016	10	10.005	10.020	16	16.028	16.046	22	3	08 10 16
AMF 1215	12	12.006	12.024	15	15.028	15.046	21	3	08 10 16
AMF 1217	12	12.006	12.024	17	17.028	17.046	23	3	12 16 20 25
AMF 1218	12	12.006	12.024	18	18.028	18.046	24	3	08 12 20
AMF 1420	14	14.006	14.024	20	20.035	20.056	26	3	10 14 20
AMF 1519	15	15.006	15.024	19	19.035	19.056	25	3	16 20 25
AMF 1521	15	15.006	15.024	21	21.035	21.056	27	3	10 15 20 25
AMF 1620	16	16.006	16.024	20	20.035	20.056	27	3	16 20 25
AMF 1622	16	16.006	16.024	22	22.035	22.056	28	3	12 16 20 25
AMF 1824	18	18.006	18.024	24	24.035	24.056	30	3	12 18 22 30
AMF 2024	20	20.007	20.028	24	24.035	24.056	30	3	16 20 25
AMF 2026	20	20.007	20.028	26	26.035	26.056	32	3	15 20 25 30
AMF 2228	22	22.007	22.028	28	28.035	28.056	34	3	15 20 25 30
AMF 2530	25	25.007	25.028	30	30.035	30.056	39	3.5	20 25 32
AMF 2532	25	25.007	25.028	32	32.043	32.068	39	3.5	20 25 30
AMF 2836	28	28.007	28.028	36	36.043	36.068	44	4	20 25 30
AMF 3038	30	30.007	30.028	38	38.043	38.068	46	4	20 25 30
AMF 3238	32	32.009	32.034	38	38.043	38.068	46	4	20 25 32
AMF 3240	32	32.009	32.034	40	40.043	40.068	48	4	20 25 30
AMF 3545	35	35.009	35.034	45	45.043	45.068	55	5	25 35 45
AMF 3848	38	38.009	38.034	48	48.043	48.068	58	5	25 35 45
AMF 4046	40	40.009	40.034	46	46.043	46.068	56	5	25 32 40
AMF 4050	40	40.009	40.034	50	50.043	50.068	60	5	25 30 40 50

Type Ref.	Ød (G8)			ØD (s8)			ØD ₁	e	Available Lengths
	Basic	Min.	Max.	Basic	Min	Max			
AMF 4252	42	42.009	42.048	52	52.053	52.099	62	5	30 40 50
AMF 4555	45	45.009	45.048	55	55.053	55.099	65	5	35 45 55
AMF 5060	50	50.009	50.048	60	60.053	60.099	70	5	32 40 50

Oil Impregnated Sintered Bronze Bushes Imperial: Plain



Townsend Bearings



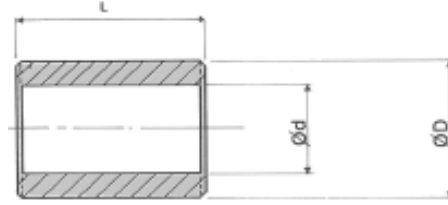
All dimensions in inches.

Type Ref.	Ød			ØD			Available Lengths
	Basic	Min.	Max.	Basic	Min	Max	
AIC 0305	3/16	0.1883	0.1888	5/16	0.3137	0.3142	1/4 3/8 1/2 5/8 3/4
AIC 0406	1/4	0.2508	0.2513	3/8	0.3767	0.3772	1/4 3/8 1/2 5/8 3/4
AIC 0407	1/4	0.2501	0.2506	7/16	0.4385	0.4390	1/4 3/8 1/2 5/8 3/4
AIC 0408	1/4	0.2507	0.2512	1/2	0.5020	0.5025	3/8 1/2 3/4
AIC 0507	5/16	0.3132	0.3137	7/16	0.4390	0.4395	5/16 3/8 1/2 9/16 5/8 3/4 1
AIC 0508	5/16	0.3132	0.3137	1/2	0.5017	0.5022	1/4 3/8 1/2 5/8 3/4
AIC 0608	3/8	0.3757	0.3762	1/2	0.5020	0.5025	3/8 1/2 5/8 3/4 7/8 1 1 1/8 1 1/4
AIC 0610	3/8	0.3754	0.3759	5/8	0.6260	0.6270	3/8 1/2 5/8 3/4 7/8 1
AIC 0709	7/16	0.4382	0.4387	9/16	0.5637	0.5647	3/8 1/2 5/8 3/4
AIC 0711	7/16	0.4383	0.4388	11/16	0.6890	0.6900	3/8 1/2 1 1/4
AIC 0810	1/2	0.5008	0.5013	5/8	0.6265	0.6275	3/8 1/2 5/8 3/4 7/8 1 1 1/8 1 1/4
AIC 0811	1/2	0.5015	0.5020	11/16	0.6895	0.6905	1/2 5/8 3/4 7/8 1
AIC 0812	1/2	0.5015	0.5020	3/4	0.7525	0.7535	1/2 5/8 3/4 1 1 1/4 2
AIC 0911	9/16	0.5628	0.5638	11/16	0.6890	0.6900	1/2 5/8 3/4 1 1 1/4
AIC 0912	9/16	0.5640	0.5650	3/4	0.7520	0.7530	1
AIC 1012	5/8	0.6255	0.6265	3/4	0.7515	0.7525	1/2 5/8 3/4 7/8 1 1 1/4
AIC 1013	5/8	0.6265	0.6275	13/16	0.8145	0.8155	3/4 1 1 1/4 1 3/8
AIC 1014	5/8	0.6255	0.6265	7/8	0.8770	0.8780	1/2 5/8 3/4 7/8 1 1 1/8 1 1/4
AIC 1115	11/16	0.6881	0.6891	15/16	0.9393	0.9403	7/8 1 1/4
AIC 1214	3/4	0.7505	0.7515	7/8	0.8765	0.8775	1/2 5/8 3/4 1 1 1/8 1 1/4
AIC 1215	3/4	0.7535	0.7545	15/16	0.9405	0.9415	3/4 1
AIC 1216	3/4	0.7508	0.7518	1	1.0020	1.0030	5/8 3/4 7/8 1 1 1/8 1 1/4
AIC 1218	3/4	0.7525	0.7535	1 1/8	1.1280	1.1290	3/4 1 1 1/4
AIC 1220	3/4	0.7525	0.7535	1 1/4	1.2535	1.2545	1 1/8 1 3/8 1 1/2 2
AIC 1416	7/8	0.8755	0.8765	1	1.0017	1.0027	3/4 1 1 1/8 1 1/4 1 1/2
AIC 1418	7/8	0.8757	0.8767	1 1/8	1.1270	1.1280	3/4 7/8 1 1 1/8 1 1/4 1 1/2
AIC 1618	1	1.0008	1.0018	1 1/8	1.1270	1.1280	3/4 1 1 1/4 1 1/2
AIC 1620	1	1.0010	1.0020	1 1/4	1.2526	1.2536	5/8 7/8 1 1 1/8 1 1/4 1 3/8 1 1/2 1 5/8 1 3/4 2
AIC 1624	1	1.0025	1.0035	1 1/2	1.5040	1.5050	1 3/8 1 1/2 1 3/4 2
AIC 1822	1 1/8	1.1258	1.1268	1 3/8	1.3770	1.3780	3/4 1 1 1/4 1 1/2 1 3/4 2
AIC 2024	1 1/4	1.2515	1.2525	1 1/2	1.5030	1.5040	1 1 1/4 1 3/8 1 1/2 1 3/4 1 7/8 2
AIC 2026	1 1/4	1.2525	1.2535	1 5/8	1.6287	1.6302	1 1 1/4 1 1/2 1 3/4 2 2 1/4 2 1/2
AIC 2226	1 3/8	1.3762	1.3722	1 5/8	1.6275	1.6290	1 1/4 1 1/2 1 3/4 2
AIC 2228	1 3/8	1.3775	1.3785	1 3/4	1.7545	1.7560	1 1/2 2 1/4
AIC 2428	1 1/2	1.5013	1.5023	1 3/4	1.7527	1.7542	1 1/4 1 1/2 1 3/4 2 2 1/4
AIC 2430	1 1/2	1.5025	1.5035	1 7/8	1.8790	1.8805	1 1/4 1 1/2 1 3/4 2 2 1/4
AIC 2432	1 1/2	1.5025	1.5035	2	2.0030	2.0045	1 1/2 2 2 1/2 3
AIC 2633	1 1/8	1.6285	1.6300	2 1/16	2.0675	2.0690	1 7/8 2 2 1/2
AIC 2832	1 3/4	1.7510	1.7525	2	2.0030	2.0045	1 1/4 1 1/2 1 3/4 2 2 1/4
AIC 2836	1 3/4	1.7510	1.7525	2 1/4	2.2530	2.2550	1 1/2 1 3/4 2 2 1/4

Please use the following table when ordering to ensure the correct length code:

- 04 = 1/4
- 05 = 5/16
- 06 = 3/8
- 08 = 1/2
- 09 = 9/16
- 10 = 5/8
- 12 = 3/4
- 14 = 7/8
- 16 = 1
- 18 = 1 1/8
- 20 = 1 1/4
- 22 = 1 3/8
- 24 = 1 1/2
- 26 = 1 5/8
- 28 = 1 3/4
- 30 = 1 7/8
- 32 = 2
- 36 = 2 1/4
- 40 = 2 1/2
- 48 = 3

For example:
AIC 0305 06, for the
3/8" long AIC 0305



All dimensions in inches.

Type Ref.	Ød			ØD			Available Lengths
	Basic	Min.	Max.	Basic	Min	Max	
AIC 3236	2	2.0010	2.0025	2 1/4	2.2530	2.2550	1 ¹ / ₂ 1 ³ / ₄ 2 2 ¹ / ₄ 2 ¹ / ₂
AIC 3240	2	2.0010	2.0025	2 1/2	2.5035	2.5055	1 ¹ / ₂ 1 ³ / ₄ 2 2 ¹ / ₄ 2 ¹ / ₂ 3
AIC 3642	2 1/4	2.2530	2.2550	2 5/8	2.6285	2.6305	2 ¹ / ₂ 3
AIC 3644	2 1/4	2.2510	2.2530	2 3/4	2.7540	2.7560	1 ¹ / ₂ 2 2 ¹ / ₄ 2 ¹ / ₂
AIC 4046	2 1/2	2.5030	2.5050	2 7/8	2.8795	2.8815	2 2 ¹ / ₂ 3
AIC 4048	2 1/2	2.5015	2.5035	3	3.0045	3.0065	1 ¹ / ₂ 2 2 ¹ / ₂ 3
AIC 4856	3	2.9980	3.0000	3 1/2	3.5020	3.5040	2 ¹ / ₂ 3

Secondary Sizes

Type Ref.	Ød			ØD			Available Lengths
	Basic	Min.	Max.	Basic	Min	Max	
AIC 121624FA	3/4	0.7522	0.7532	1	1.0025	1.0035	1 ¹ / ₂
AIC 121628FA	3/4	0.7522	0.7532	1	1.0025	1.0035	1 ³ / ₄
AIC 121632FA	3/4	0.7522	0.7532	1	1.0025	1.0035	2
AIC 121610FB	3/4	0.7515	0.7525	1	1.0020	1.0030	5/8
AIC 121614FB	3/4	0.7515	0.7525	1	1.0020	1.0030	7/8
AIC 121620FB	3/4	0.7515	0.7525	1	1.0020	1.0030	1 ¹ / ₄

Please use the following table when ordering to ensure the correct length code:

04 = 1/4	05 = 5/16	06 = 3/8
08 = 1/2	09 = 9/16	10 = 5/8
12 = 3/4	14 = 7/8	16 = 1
18 = 1 1/8	20 = 1 1/4	22 = 1 3/8
24 = 1 1/2	26 = 1 5/8	28 = 1 3/4
30 = 1 7/8	32 = 2	36 = 2 1/4
40 = 2 1/2	48 = 3	

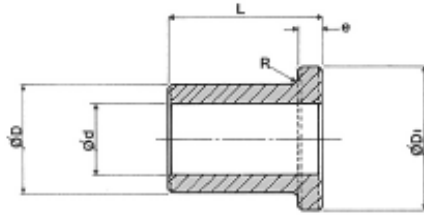
For example:

AIC 3236 24, for the 1 1/2" long AIC 3236

Oil Impregnated Sintered Bronze Bushes Imperial: Flange



Townsend Bearings



All dimensions in inches.

Type Ref.	Ød			ØD			ØD ₁	e	Available Lengths
	Basic	Min.	Max.	Basic	Min	Max			
AIF 0305	3/16	0.1880	0.1885	5/16	0.3137	0.3142	0.3750	0.062	1/4 3/8 1/2
AIF 0406	1/4	0.2505	0.2510	3/8	0.3767	0.3722	0.5000	0.062	1/4 3/8 1/2 3/4
AIF 0508	5/16	0.3130	0.3135	1/2	0.5020	0.5025	0.6250	0.062	1/4 3/8 1/2 3/4
AIF 0509	5/16	0.3120	0.3125	9/16	0.5640	0.5650	0.6562	0.125	3/8 5/8 3/4
AIF 0608	3/8	0.3755	0.3760	1/2	0.5015	0.5020	0.6250	0.062	1/2 1/8
AIF 0609	3/8	0.3747	0.3752	9/16	0.5640	0.5650	0.7500	0.062	1/2
AIF 0610	3/8	0.3757	0.3762	5/8	0.6265	0.6275	0.7500	0.125	3/8 1/2 5/8 3/4
AIF 0709	7/16	0.4401	0.4406	9/16	0.5641	0.5651	0.7500	0.062	1/2 3/4 1
AIF 0810	1/2	0.5000	0.5005	5/8	0.6265	0.6275	0.7500	0.098	1/2 1
AIF 0812	1/2	0.5008	0.5013	3/4	0.7417	0.7527	1.0000	0.125	1/2 3/4 1 1 1/8
AIF 1012	5/8	0.6275	0.6285	3/4	0.7525	0.7535	1.1250	0.094	1/2 1 1 1/8
AIF 1014	5/8	0.6255	0.6265	7/8	0.8770	0.8780	1.2500	0.125	1/2 3/4 1 1 1/8
AIF 1216	3/4	0.7508	0.7518	1	1.0020	1.0030	1.3750	0.125	3/4 1 1 1/4 1 1/2
AIF 1416	7/8	0.8755	0.8765	1	1.0017	1.0027	1.2500	0.125	1
AIF 1418	7/8	0.8757	0.8767	1 1/8	1.1270	1.1280	1.6250	0.125	3/4 1 1 1/4 1 1/2
AIF 1620	1	1.0010	1.0020	1 1/4	1.2526	1.2536	1.7500	0.125	1 1 1/4 1 1/2 1 3/4 2
AIF 1822	1 1/8	1.1260	1.1270	1 3/8	1.3776	1.3786	1.8750	0.125	1 1 1/4 1 1/2 1 3/4
AIF 2024	1 1/4	1.2510	1.2520	1 1/2	1.5030	1.5040	1.8750	0.125	3/4 1 1/4 1 1/2
AIF 2026	1 1/4	1.2516	1.2526	1 5/8	1.6280	1.6295	2.0000	0.125	1 1 1/4 1 1/2 1 3/4
AIF 2226	1 3/8	1.3745	1.3755	1 5/8	1.6270	1.6285	1.8770	0.125	3/4 1 1/4
AIF 2428	1 1/2	1.5016	1.5026	1 3/4	1.7510	1.7525	1.8700	0.120	1 1/2 1 7/8
AIF 2430	1 1/2	1.5016	1.5026	1 7/8	1.8780	1.8795	2.5000	0.188	1 1/4 1 1/2 1 3/4 2

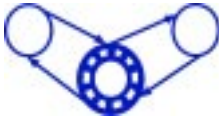
Please use the following table when ordering to ensure the correct length code:

04 = 1/4
05 = 5/16
06 = 3/8
08 = 1/2
09 = 9/16
10 = 5/8
12 = 3/4
14 = 7/8
16 = 1
18 = 1 1/8
20 = 1 1/4
22 = 1 3/8
24 = 1 1/2
26 = 1 5/8
28 = 1 3/4
30 = 1 7/8
32 = 2
36 = 2 1/4
40 = 2 1/2
48 = 3

Secondary Sizes

For example:
AIF 0305 04, for the
1/4" long AIF 0305

Type Ref.	Ød			ØD			ØD ₁	e	Available Lengths
	Basic	Min.	Max.	Basic	Min	Max			
AIF 060808FA	3/8	0.3755	0.3760	1/2	0.5020	0.5025	0.6250	0.140	1/2
AIF 060812FA	3/8	0.3755	0.3760	1/2	0.5020	0.5025	0.6250	0.140	3/4
AIF 060814FA	3/8	0.3755	0.3760	1/2	0.5020	0.5025	0.6250	0.140	7/8
AIF 162012FA	1	1.0010	1.0020	1 1/4	1.2520	1.2530	1.5000	0.125	3/4
AIF 162016FA	1	1.0010	1.0020	1 1/4	1.2520	1.2530	1.5000	0.125	1
AIF 162018FA	1	1.0010	1.0020	1 1/4	1.2520	1.2530	1.5000	0.125	1 1/8
AIF 162024FA	1	1.0010	1.0020	1 1/4	1.2520	1.2530	1.5000	0.125	1 1/2



Cored Bars

Imperial (inches)			Metric Equiv. (mm)		
Bore	Outside Diameter	Length	Bore	Outside Diameter	Length
1/2	1	6 1/2	12.7	25.4	165
1/2	1 1/2	6 1/2	12.7	38.1	165
5/8	1 3/8	6 1/2	15.88	34.9	165
5/8	1 1/2	6 1/2	15.88	38.1	165
3/4	2	6 1/2	19.05	50.8	165
7/8	1 1/2	6 1/2	22.23	38.1	165
7/8	2	6 1/2	22.23	50.8	165
7/8	2 1/4	6 1/2	22.23	57.2	165
1	2	6 1/2	25.4	50.8	165
1	3	6 1/2	25.4	76.2	165
1 1/2	3	6 1/2	38.1	76.2	165
2	3	6 1/2	50.8	76.2	165
2	4	6 1/2	50.8	101.6	165
2 1/2	4	6 1/2	63 1/2	101.6	165
3 3/4	5	6 1/2	95 1/4	127.0	165
4	6	6 1/2	101.6	152.4	165

Solid Bars

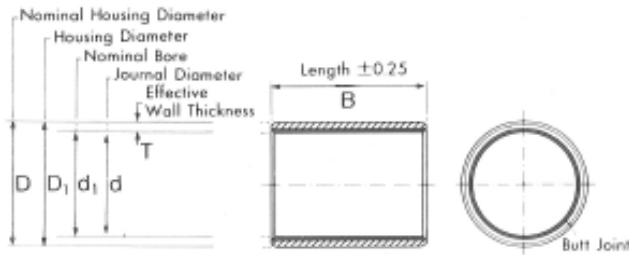
Imperial (inches)		Metric Equiv. (mm)	
Outside Diameter	Length	Outside Diameter	Length
3/8	3	9.5	76.2
1/2	6 1/2	12.7	165
0.787	2.047	20	52
1	6 1/2	25.4	165
1 1/2	6 1/2	38.1	165
1.574	2.047	40	52
2	6 1/2	50.8	165
2.362	2.362	60	60
3.149	3.149	80	80
6	6 1/2	152	165

PTFE Lined Steel Split Bush

Metric: Plain

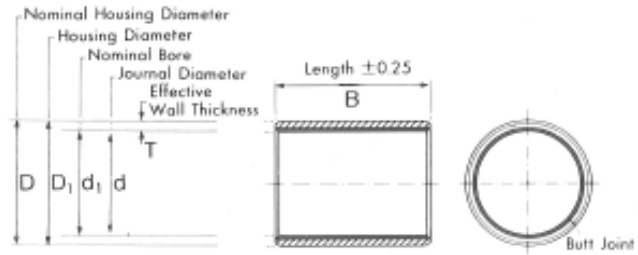


Townsend Bearings



All dimensions in mm.

d ₁	D	d	D ₁	T	B					
2	3.50	2.000 1.994	3.500 3.508	0.750 0.730	3 MB 0203DU	5 MB 0205DU				
3	4.50	3.000 2.994	4.500 4.508		3 MB 0303DU	5 MB 0305DU	6 MB 0306DU			
4	5.50	4.000 3.992	5.500 5.508		3 MB 0403DU	4 MB 0404DU	6 MB 0406DU	10 MB 0410DU		
5	7.00	4.990 4.978	7.000 7.015	1.005 0.980	5 MB 0505DU	8 MB 0508DU	10 MB 0510DU			
6	8.00	5.990 5.978	8.000 8.015		6 MB 0606DU	8 MB 0608DU	10 MB 0610DU			
7	9.00	6.987 6.972	9.000 9.015		10 MB 0710DU					
8	10.00	7.987 7.972	10.000 10.015		8 MB 0808DU	10 MB 0810DU	12 MB 0812DU			
10	12.00	9.987 9.972	12.000 12.018		8 MB 1008DU	10 MB 1010DU	12 MB 1012DU	15 MB 1015DU	20 MB 1020DU	
12	14.00	11.984 11.966	14.000 14.018		8 MB 1208DU	10 MB 1210DU	12 MB 1212DU	15 MB 1215DU	20 MB 1220DU	25 MB 1225DU
13	15.00	12.984 12.966	15.000 15.018		10 MB 1310DU	20 MB 1320DU				
14	16.00	13.984 13.966	16.000 16.018		5 MB 1405DU	10 MB 1410DU	12 MB 1412DU	15 MB 1415DU	20 MB 1420DU	25 MB 1425DU
15	17.00	14.984 14.966	17.000 17.018		10 MB 1510DU	12 MB 1512DU	15 MB 1515DU	20 MB 1520DU	25 MB 1525DU	
16	18.00	15.984 15.966	18.000 18.018		10 MB 1610DU	12 MB 1612DU	15 MB 1615DU	20 MB 1620DU	25 MB 1625DU	
17	19.00	16.984 16.966	19.000 19.021		20 MB 1720DU					
18	20.00	17.984 17.966	20.000 20.021		15 MB 1815DU	20 MB 1820DU	25 MB 1825DU			
20	23.00	19.980 19.959	23.000 23.021		1.505 1.475	10 MB 2010DU	15 MB 2015DU	20 MB 2020DU	25 MB 2025DU	30 MB 2030DU
22	25.00	21.980 21.959	25.000 25.021			15 MB 2215DU	20 MB 2220DU	25 MB 2225DU	30 MB 2230DU	
24	27.00	23.980 23.959	27.000 27.021			15 MB 2415DU	20 MB 2420DU	25 MB 2425DU	30 MB 2430DU	
25	28.00	24.980 24.959	28.000 28.021	15 MB 2515DU		20 MB 2520DU	25 MB 2525DU	30 MB 2530DU	50 MB 2550DU	
28	32.00	27.980 27.959	32.000 32.025	15 MB 2815DU		20 MB 2820DU	25 MB 2825DU	30 MB 2830DU		
30	34.00	29.980 29.959	34.000 34.025	2.005 1.970	15 MB 3015DU	20 MB 3020DU	25 MB 3025DU	30 MB 3030DU	40 MB 3040DU	
32	36.00	31.975 31.950	36.000 36.025		20 MB 3220DU	30 MB 3230DU	40 MB 3240DU			
35	39.00	34.975 34.950	39.000 39.025		20 MB 3520DU	30 MB 3530DU	35 MB 3535DU	40 MB 3540DU	50 MB 3550DU	
37	41.00	36.975 36.950	41.000 41.025		20 MB 3720DU					
40	44.00	39.975 39.950	44.000 44.025		20 MB 4020DU	30 MB 4030DU	40 MB 4040DU	50 MB 4050DU		

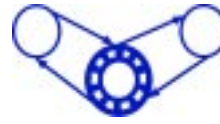


All dimensions in mm.

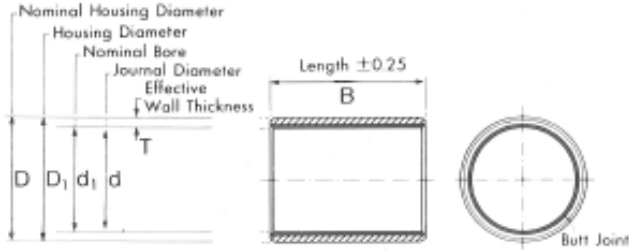
d_1	D	d	D_1	T	B					
45	50.00	44.975	50.000	2.505 2.460	20 MB	30 MB	40 MB	45 MB	50 MB	
		44.950	50.025		4520DU	4530DU	4540DU	4545DU	4550DU	
50	55.00	49.975	55.000		20 MB	30 MB	40 MB	50 MB	60 MB	
		49.950	55.030		5020DU	5030DU	5040DU	5050DU	5060DU	
55	60.00	54.970	60.000		20 MB	25 MB	30 MB	40 MB		
		54.940	60.030		5520DU	5525DU	5530DU	5540DU		
								50 MB	55 MB	60 MB
								5550DU	5555DU	5560DU
60	65.00	59.970	65.000		20 MB	30 MB	40 MB	60 MB	70 MB	
		59.940	65.030		6020DU	6030DU	6040DU	6060DU	6070DU	
65	70.00	64.970	70.000	30 MB	50 MB	70 MB				
		64.940	70.030	6530DU	6550DU	6570DU				
70	75.00	69.970	75.000	40 MB	50 MB	70 MB				
		69.940	75.030	7040DU	7050DU	7070DU				
75	80.00	74.970	80.000	60 MB	80 MB					
		74.940	80.030	7560DU	7580DU					
80	85.00	80.000	85.000	60 MB	100 MB					
		79.954	85.035	8060DU	80100DU					
85	90.00	85.000	90.000	30 MB	60 MB	100 MB				
		84.946	90.035	8530DU	8560DU	85100DU				
90	95.00	90.000	95.000	60 MB	100 MB					
		89.946	95.035	9060DU	90100DU					
95	100.00	95.000	100.000	60 MB	100 MB					
		94.946	100.035	9560DU	95100DU					
100	105.00	100.000	105.000	60 MB	115 MB					
		99.946	105.035	10060DU	100115DU					
105	110.00	105.000	110.000	60 MB	115 MB					
		104.946	110.035	10560DU	105115DU					
110	115.00	110.000	115.000	60 MB	115 MB					
		109.946	115.035	11060DU	110115DU					
115	120.00	115.000	120.000	50 MB	70 MB					
		114.946	120.035	11550DU	11570DU					
120	125.00	120.000	125.000	50 MB	60 MB	100 MB				
		119.946	125.040	12050DU	12060DU	120100DU				
125	130.00	125.000	130.000	100 MB						
		124.937	130.040	125100DU						
130	135.00	130.000	135.000	60 MB	100 MB					
		129.937	135.040	13060DU	130100DU					
135	140.00	135.000	140.000	60 MB	80 MB					
		134.937	140.040	13560DU	13580DU					
140	145.00	140.000	145.000	60 MB	100 MB					
		139.937	145.040	14060DU	140100DU					
150	155.00	150.000	155.000	60 MB	80 MB	100 MB				
		149.937	155.040	15060DU	15080DU	150100DU				
160	165.00	160.000	165.000	80 MB	100 MB					
		159.937	165.040	16080DU	160100DU					
170	175.00	170.000	175.000							
		169.937	175.040							
180	185.00	180.000	185.000	100 MB						
		179.937	185.046	180100DU						

PTFE Lined Steel Split Bush

Metric: Plain (continued)

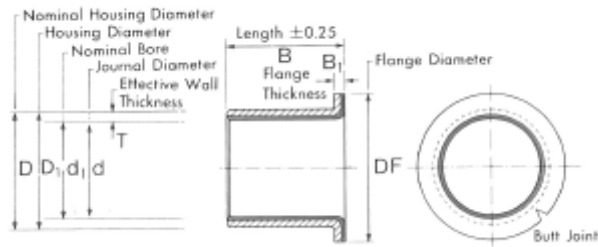


Townsend Bearings



All dimensions in mm.

d_1	D	d	D_1	T	B
190	195.00	190.000 189.928	195.000 195.046	2.465 2.415	
200	205.00	200.000 199.928	205.000 205.046		100 MB 200100DU
210	215.00	210.000 209.928	215.000 215.046		100 MB 210100DU
220	225.00	220.000 219.928	225.000 225.046		100 MB 220100DU
230	235.00	230.000 229.928	235.000 235.046		
240	245.00	240.000 239.928	245.000 245.046		
250	255.00	250.000 249.928	255.000 255.052		100 MB 250100DU
260	265.00	260.000 259.919	265.000 265.052		
270	275.00	270.000 269.919	275.000 275.052		
280	285.00	280.000 279.919	285.000 285.052		
290	295.00	290.000 289.919	295.000 295.052		
300	305.00	300.000 299.919	305.000 305.052		100 MB 300100DU
320	325.00	319.938 319.849	325.000 325.057		
340	345.00	339.938 339.849	345.000 345.057		
360	365.00	359.938 359.849	365.000 365.057		
380	385.00	379.938 379.849	385.000 385.057		
400	405.00	399.938 399.849	405.000 405.059		



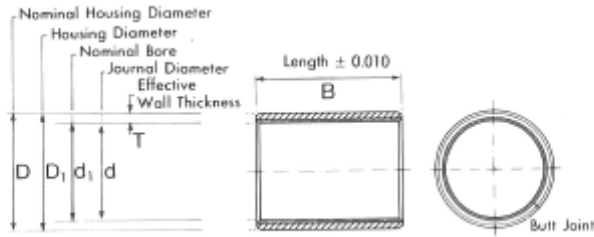
All dimensions in mm.

d ₁	D	DF	d	D ₁	B ₁	T	B											
6	8.00	12.00	5.990	8.014	1.000	1.005	4	FMB 0604DU	8	FMB 0608DU								
			5.978	8.000														
8	10.00	15.00	7.987	10.015			0.800	0.980	5.5	FMB 0805.5DU	7.5	FMB 0807.5DU	9.5	FMB 0809.5DU				
			7.972	10.000														
10	12.00	18.00	9.987	12.018			1.500	1.505	7	FMB 1007DU	9	FMB 1009DU	12	FMB 1012DU	17	FMB 1017DU		
			9.972	12.000														
12	14.00	20.00	11.984	14.018					1.300	1.475	7	FMB 1207DU	9	FMB 1209DU	12	FMB 1212DU	17	FMB 1217DU
			11.966	14.000														
14	16.00	22.00	13.984	16.018					2.000	2.005	12	FMB 1412DU	17	FMB 1417DU				
			13.966	16.000														
15	17.00	23.00	14.984	17.018	1.800	1.970					9	FMB 1509DU	12	FMB 1512DU	17	FMB 1517DU		
			14.966	17.000														
16	18.00	24.00	15.984	18.018	2.000	2.005					12	FMB 1612DU	17	FMB 1617DU				
			15.966	18.000														
18	20.00	26.00	17.984	20.021			1.500	1.505			12	FMB 1812DU	17	FMB 1817DU	22	FMB 1822DU		
			17.966	20.000														
20	23.00	30.00	19.980	23.021			1.300	1.475			11.5	FMB 2011.5DU	16.5	FMB 2016.5DU	21.5	FMB 2021.5DU		
			19.959	23.000														
25	28.00	35.00	24.980	28.021			2.000	2.005	11.5	FMB 2511.5DU	16.5	FMB 2516.5DU	21.5	FMB 2521.5DU				
			24.959	28.000														
30	34.00	42.00	29.980	34.025					1.800	1.970	16	FMB 3016DU	26	FMB 3026DU				
			29.959	34.000														
35	39.00	47.00	34.975	39.025	1.800	1.970			16	FMB 3516DU	26	FMB 3526DU						
			34.950	39.000														
40	44.00	52.00	39.975	44.025	1.800	1.970			16	FMB 4016DU	26	FMB 4026DU						
			39.950	44.000														

PTFE Lined Steel Split Bush Imperial: Plain

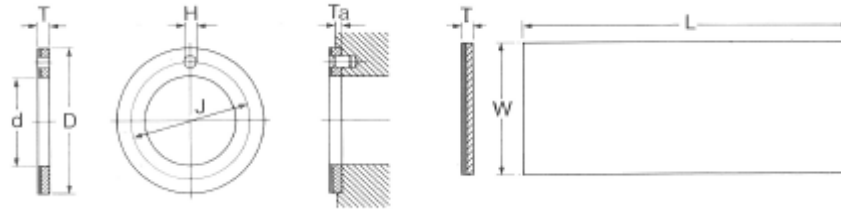
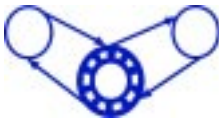


Townsend Bearings



All dimensions in inches.

d_1	D	d	D_1	T	B							
$1/8$	$3/16$	0.1243 0.1236	0.1873 0.1878	0.0315 0.0305	$1/8$	02DU02	$3/16$	02DU03				
$5/32$	$7/32$	0.1554 0.1547	0.2186 0.2191		$5/32$	025DU025	$1/4$	025DU04				
$3/16$	$1/4$	0.1865 0.1858	0.2497 0.2503		$3/16$	03DU03	$1/4$	03DU04	$3/8$	03DU06		
$1/4$	$5/16$	0.2490 0.2481	0.3122 0.3128		$1/4$	04DU04	$3/8$	04DU06				
$5/16$	$3/8$	0.3115 0.3106	0.3747 0.3753		$3/8$	05DU06	$1/2$	05DU08				
$3/8$	$15/32$	0.3740 0.3731	0.4684 0.4691		$3/4$	06DU06	$1/2$	06DU08	$3/4$	06DU12		
$7/16$	$17/32$	0.4365 0.4355	0.5309 0.5316	0.0471 0.0461	$1/2$	07DU08	$3/4$	17DU12				
$1/2$	$19/32$	0.4990 0.4980	0.5934 0.5941		$3/8$	08DU06	$1/2$	08DU08	$5/8$	08DU10	$7/8$	08DU14
$9/16$	$21/32$	0.5615 0.5605	0.6559 0.6566		$1/2$	09DU08	$3/4$	09DU12				
$5/8$	$23/32$	0.6240 0.6230	0.7184 0.7192		$1/2$	10DU08	$5/8$	10DU10	$3/4$	10DU12	$7/8$	10DU14
$11/16$	$25/32$	0.6865 0.6855	0.7809 0.7817		$7/8$	11DU14						
$3/4$	$7/8$	0.7491 0.7479	0.8747 0.8755		0.0627 0.0615	$1/2$	12DU08	$3/4$	12DU12	1	12DU16	
$7/8$	1	0.8741 0.8729	0.9997 1.0005	$3/4$		14DU12	$7/8$	14DU14	1	14DU16		
1	$1 1/8$	0.9991 0.9979	1.1246 1.1256	$3/4$		16DU12	1	16DU16	$1 1/2$	16DU24		
$1 1/8$	$1 9/32$	1.1238 1.1226	1.2808 1.2818	0.0784 0.0770	$3/4$	18DU12	1	18DU16				
$1 1/4$	$1 13/32$	1.2488 1.2472	1.4058 1.4068		$3/4$	20DU12	1	20DU16	$1 1/4$	20DU20	$1 3/4$	20DU28
$1 3/8$	$1 17/32$	1.3738 1.3722	1.5308 1.5318		1	22DU16	$1 3/8$	22DU22	$1 3/4$	22DU28		
$1 1/2$	$1 21/32$	1.4988 1.4972	1.6558 1.6568		1	24DU16	$1 1/4$	24DU20	$1 1/2$	24DU24	2	24DU32
$1 5/8$	$1 25/32$	1.6238 1.6222	1.7808 1.7818		1	26DU16	$1 1/2$	26DU24				
$1 3/4$	$1 15/16$	1.7487 1.7471	1.9371 1.9381		1	28DU16	$1 1/2$	28DU24	$1 3/4$	28DU28	2	28DU32
$1 7/8$	$2 1/16$	1.8737 1.8721	2.0621 2.0633	0.0941 0.0923	1	30DU16	$1 7/8$	30DU30	$2 1/4$	30DU36		
2	$2 3/16$	1.9987 1.9969	2.1871 2.1883		1	32DU16	$1 1/2$	32DU24	2	32DU32	$2 1/2$	32DU40
$2 1/4$	$2 7/16$	2.2507 2.2489	2.4365 2.4377		2	36DU32	$2 1/4$	36DU36	$2 1/2$	36DU40	3	36DU48
$2 1/2$	$2 11/16$	2.5011 2.4993	2.6869 2.6881	0.0928 0.0902	2	40DU32	$2 1/2$	40DU40	3	40DU48	$3 1/2$	40DU56
$2 3/4$	$2 15/16$	2.7500 2.7482	2.9358 2.9370		2	44DU32	$2 1/2$	44DU40	3	44DU48	$3 1/2$	44DU56
3	$3 3/16$	3.0000 2.9982	3.1858 3.1872		2	48DU32	3	48DU48	$3 3/4$	48DU60		
$3 1/2$	$3 11/16$	3.5000 3.4978	3.6858 3.6872		$2 1/2$	56DU40	3	56DU48	$3 3/4$	56DU60		
4	$4 3/16$	4.0000 3.9978	4.1858 4.1872		3	64DU48	$3 3/4$	64DU60	$4 3/4$	64DU76		
5	$5 3/16$	4.9986 4.9961	5.1844 5.1860		3	80DU48	$3 3/4$	80DU60				
6	$6 3/16$	6.0000 5.9975	6.1858 6.1874		3	96DU48	$3 3/4$	96DU60				
7	$7 3/16$	6.9954 6.9929	7.1812 7.1830		$3 3/4$	112DU60						



Thrust Washers: Metric

Part No.	d	D	T	H	J	Ta
WC08DU	10.00	20.00	1.50	No Hole		0.95
	10.25	19.75	1.45			1.20
WC10DU	12.00	24.00	1.50	1.625	18.12	0.95
	12.25	23.75	1.45	1.875	17.88	1.20
WC12DU	14.00	26.00	1.50	2.125	22.12	0.95
	14.25	25.75	1.45	2.375	19.88	1.20
WC14DU	16.00	30.00	1.50	2.125	22.12	0.95
	16.25	29.75	1.45	2.375	21.88	1.20
WC16DU	18.00	32.00	1.50	2.125	25.12	0.95
	18.25	31.75	1.45	2.375	24.88	1.20
WC18DU	20.00	36.00	1.50	3.125	28.12	0.95
	20.25	35.75	1.45	3.375	27.88	1.20
WC20DU	22.00	38.00	1.50	3.125	30.12	0.95
	22.25	37.75	1.45	3.375	29.88	1.20
WC22DU	24.00	42.00	1.50	3.125	33.12	0.95
	24.25	41.75	1.45	3.375	32.88	1.20
WC24DU	26.00	44.00	1.50	3.125	35.12	0.95
	26.25	43.75	1.45	3.375	34.88	1.20
WC25DU	28.00	48.25	1.50	4.125	38.12	0.95
	28.25	47.75	1.45	4.375	37.88	1.20
WC30DU	32.00	54.00	1.50	4.125	43.12	0.95
	32.25	53.75	1.45	4.375	42.88	1.20
WC35DU	38.00	62.00	1.50	4.125	50.12	0.95
	38.25	61.75	1.45	4.375	49.88	1.20
WC40DU	42.00	66.00	1.50	4.125	54.12	0.95
	42.25	65.75	1.45	4.375	53.88	1.20
WC45DU	48.00	74.00	2.00	4.125	61.12	1.45
	48.25	73.75	1.95	4.375	60.88	1.70
WC50DU	52.00	78.00	2.00	4.125	65.12	1.45
	52.25	77.75	1.95	4.375	64.88	1.70
WC60DU	62.00	90.00	2.00	4.125	76.12	1.45
	62.25	89.75	1.95	4.375	75.88	1.70

Strip: Metric

Metric Sizes In lengths (L) of approx. 500mm		
Part No.	T +0/-0.04 mm	W mm
075150DU	0.75	150
100200DU	1.00	200
150240DU	1.50	240
200240DU	2.00	240
250240DU	2.50	240
306240DU	3.06	240

All dimensions in mm.

Thrust Washers: Imperial

DU06	0.500	0.875	0.063	0.067	0.692	0.040
	0.510	0.865	0.061	0.077	0.682	0.050
DU07	0.562	1.000	0.063	0.067	0.786	0.040
	0.572	0.990	0.061	0.077	0.776	0.050
DU08	0.625	1.125	0.063	0.099	0.880	0.040
	0.635	1.115	0.061	0.109	0.870	0.050
DU09	0.687	1.187	0.063	0.099	0.942	0.040
	0.697	1.177	0.061	0.109	0.932	0.050
DU10	0.750	1.250	0.063	0.099	1.005	0.040
	0.760	1.240	0.061	0.109	0.885	0.050
DU11	0.812	1.375	0.063	0.099	1.099	0.040
	0.822	1.365	0.061	0.109	1.089	0.050
DU12	0.875	1.500	0.063	0.130	1.192	0.040
	0.885	1.490	0.061	0.140	1.182	0.050
DU14	1.000	1.750	0.063	0.130	1.380	0.040
	1.010	1.740	0.061	0.140	1.370	0.050
DU16	1.125	2.000	0.063	0.161	1.567	0.040
	1.135	1.990	0.061	0.171	1.557	0.050
DU18	1.250	2.125	0.063	0.161	1.692	0.040
	1.260	2.115	0.061	0.171	1.682	0.050
DU20	1.375	2.250	0.063	0.161	1.817	0.040
	1.385	2.240	0.061	0.171	1.807	0.050
DU22	1.500	2.500	0.063	0.192	2.005	0.040
	1.510	2.490	0.061	0.202	1.995	0.050
DU24	1.625	2.625	0.063	0.192	2.130	0.040
	1.635	2.615	0.061	0.202	2.120	0.050
DU26	1.750	2.750	0.063	0.192	2.255	0.040
	1.760	2.740	0.061	0.202	2.245	0.050
DU28	2.000	3.000	0.093	0.192	2.505	0.070
	2.010	2.990	0.091	0.202	2.495	0.080
DU30	2.125	3.125	0.093	0.192	2.630	0.070
	1.135	3.115	0.091	0.202	2.620	0.080
DU32	2.250	3.250	0.093	0.192	2.755	0.070
	2.260	3.240	0.091	0.202	2.745	0.080

Strip: Imperial

Inch Sizes In lengths (L) of 18in		
Group No.	T in	W in
0	0.0277 - 0.0293	2.75
1	0.0430 - 0.0447	4
2	0.0586 - 0.0602	4
3	0.0740 - 0.0756	4
4	0.0897 - 0.0913	4
5	0.1190 - 0.1210	4

All dimensions in inches.



**Townsend
Bearings**

Townsend Bearings & Transmissions Limited

**Unit 1, St.Andrews Industrial Estate,
Bridport, Dorset. DT6 3EX. England.**

**Tel : 01308 456933 (UK only) +44 1308 456933 (Outside the UK)
Fax : 01308 427913 (UK only) +44 1308 427913 (Outside the UK)**

Email : sales@townsendbearings.co.uk

www.townsendbearings.co.uk